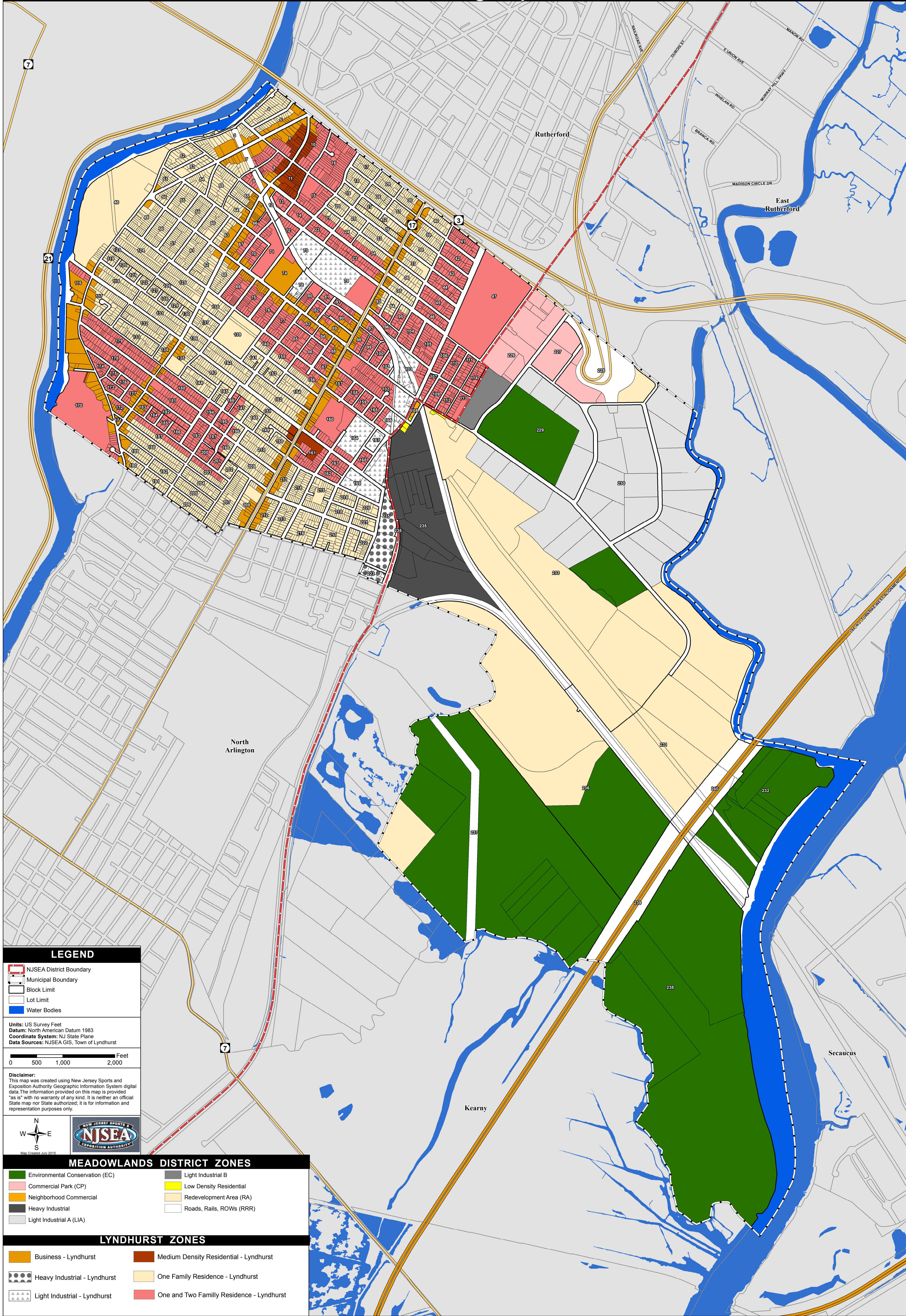


Township of Lyndhurst Zoning Map



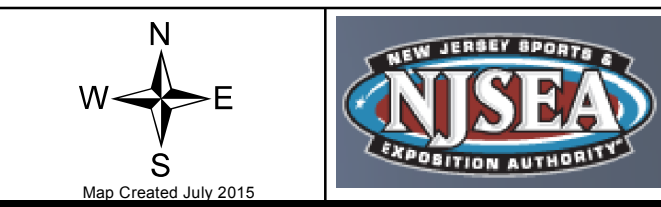
LEGEND

- NJSEA District Boundary
- Municipal Boundary
- Block Limit
- Lot Limit
- Water Bodies

Units: US Survey Feet
 Datum: North American Datum 1983
 Coordinate System: NJ State Plane
 Data Sources: NJSEA GIS, Town of Lyndhurst

0 500 1,000 2,000 Feet

Disclaimer:
 This map was created using New Jersey Sports and Exposition Authority Geographic Information System digital data. The information provided on this map is provided "as is" with no warranty of any kind. It is neither an official State map nor State authorized; it is for information and representation purposes only.



MEADOWLANDS DISTRICT ZONES

- Environmental Conservation (EC)
- Light Industrial B
- Commercial Park (CP)
- Low Density Residential
- Neighborhood Commercial
- Redevelopment Area (RA)
- Heavy Industrial
- Roads, Rails, ROWs (RRR)
- Light Industrial A (LIA)

LYNDHURST ZONES

- Business - Lyndhurst
- Medium Density Residential - Lyndhurst
- Heavy Industrial - Lyndhurst
- One Family Residence - Lyndhurst
- Light Industrial - Lyndhurst
- One and Two Family Residence - Lyndhurst